

# 12

INSIGHTS AND STATISTICS

FOR

## FACILITIES MANAGEMENT

The North American **FM market** segment is anticipated to be worth

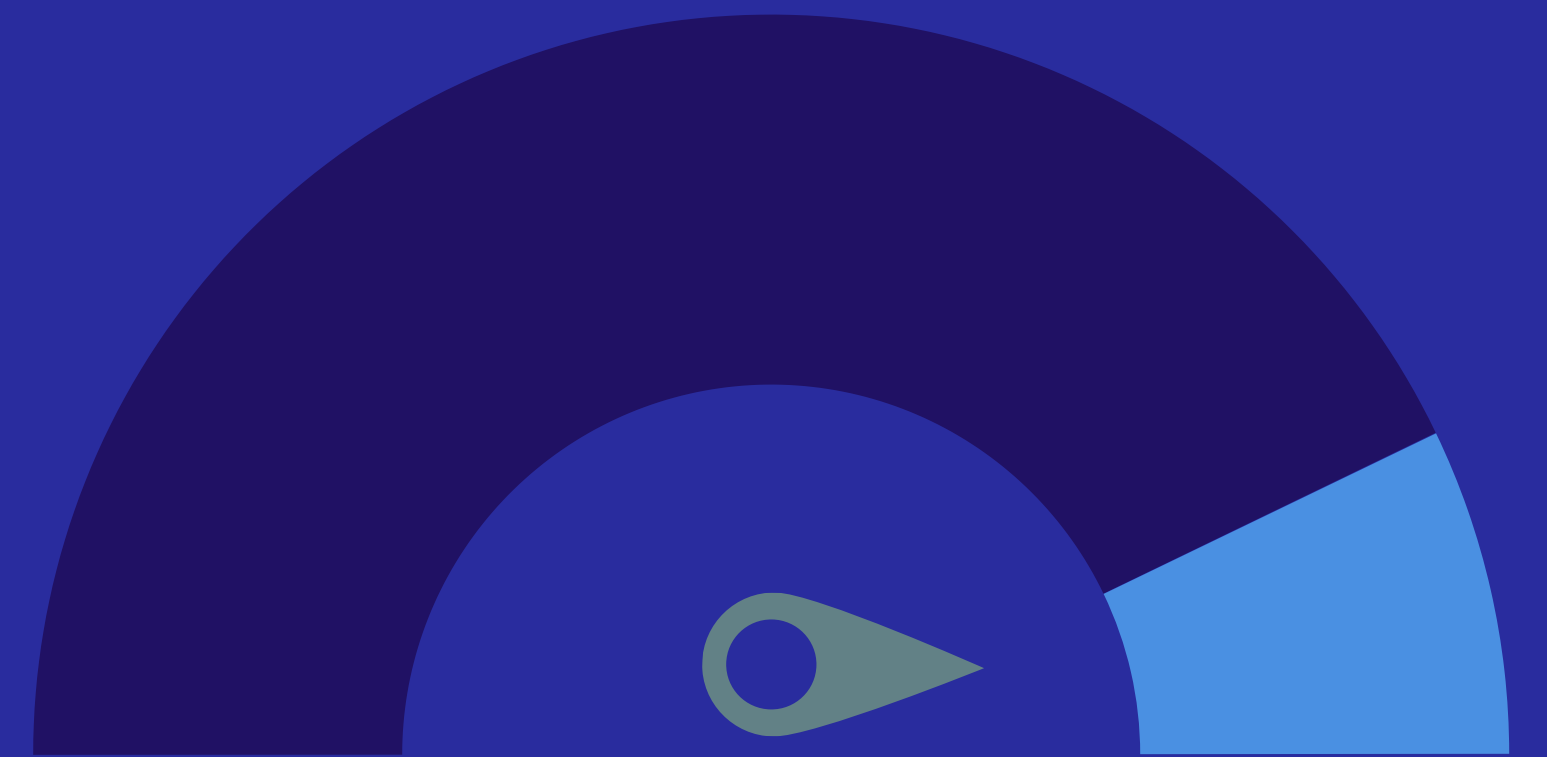
### 340B

by the end of 2024.



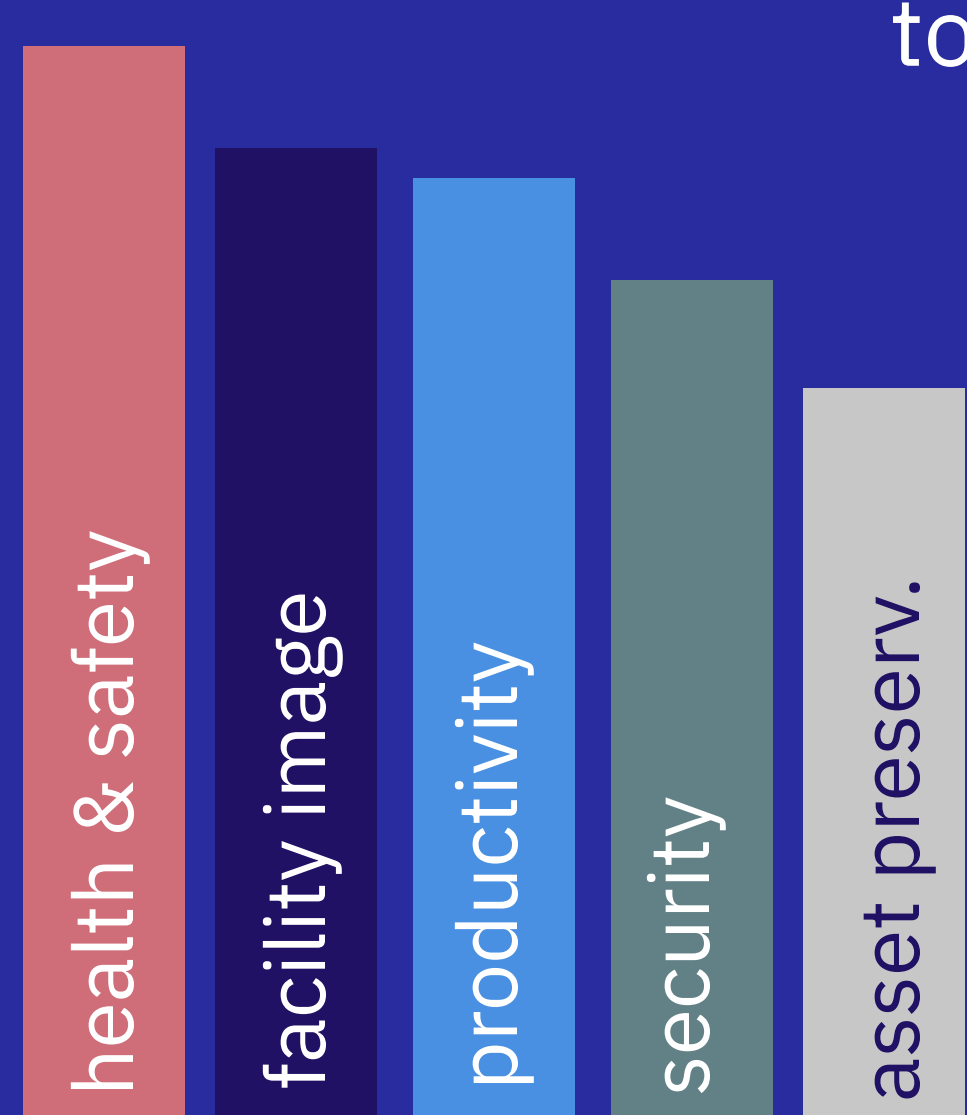
### 12%

of the total **US energy consumption** in 2021 was consumed by facilities.



### 82%

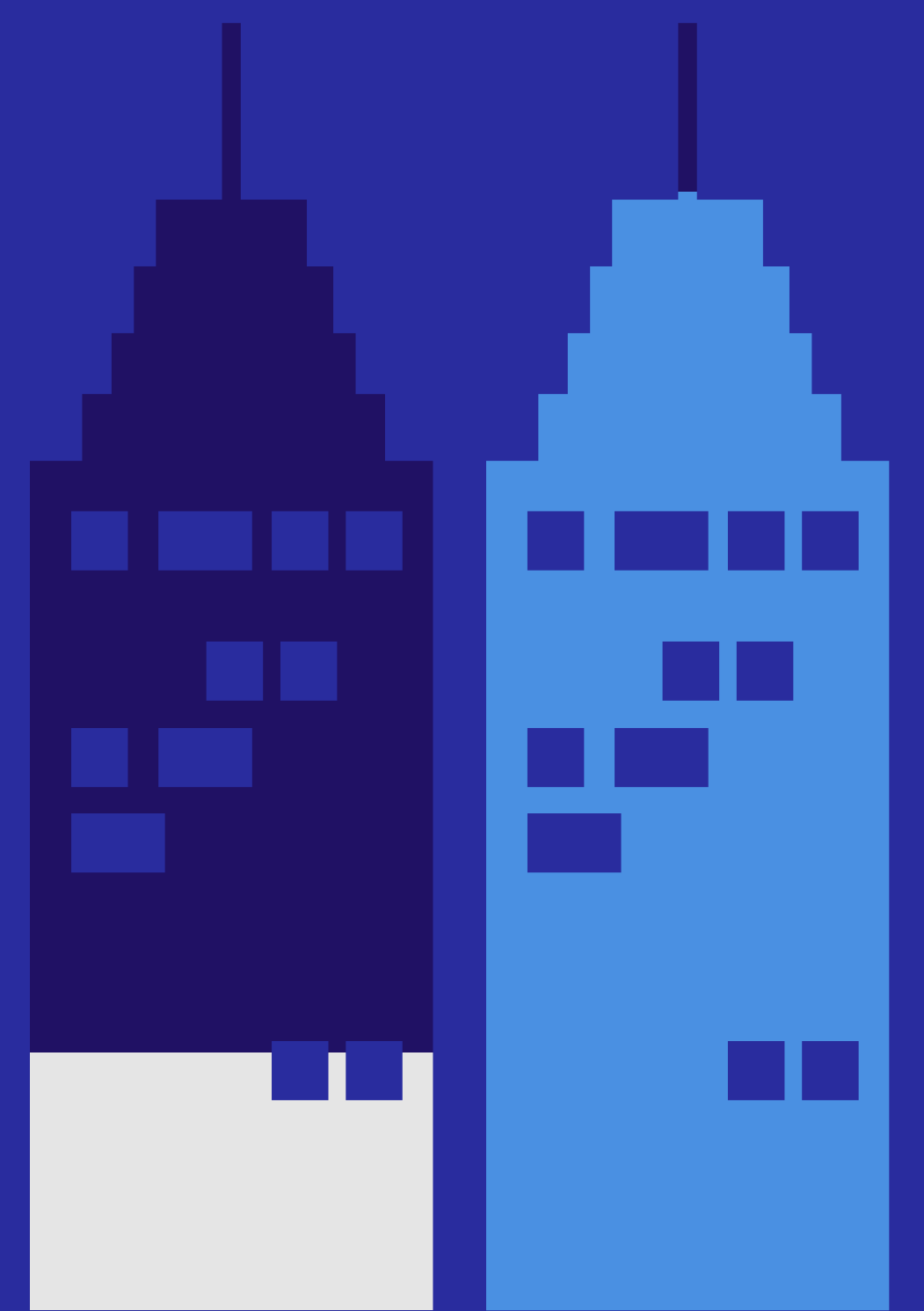
of facility managers say **health and safety** is the biggest issue they face today.



We spend nearly

### 20%

of our **time** in a building outside of our home and nearly 87% of our time indoors.



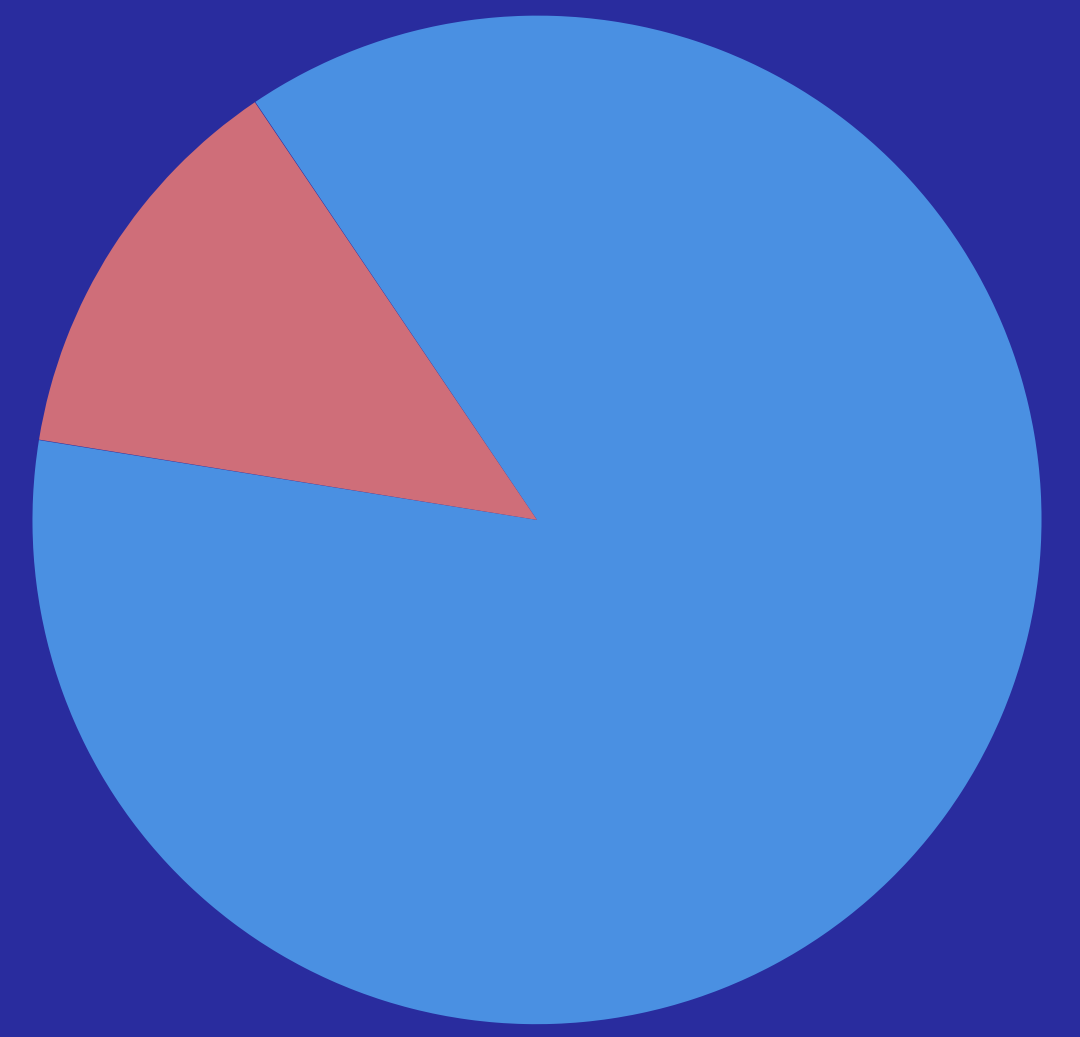
Hospitals and labs emit 4.4% of the world's greenhouse gas emissions. And they are responsible for **tons of waste** each year, averaging up to

### 5M



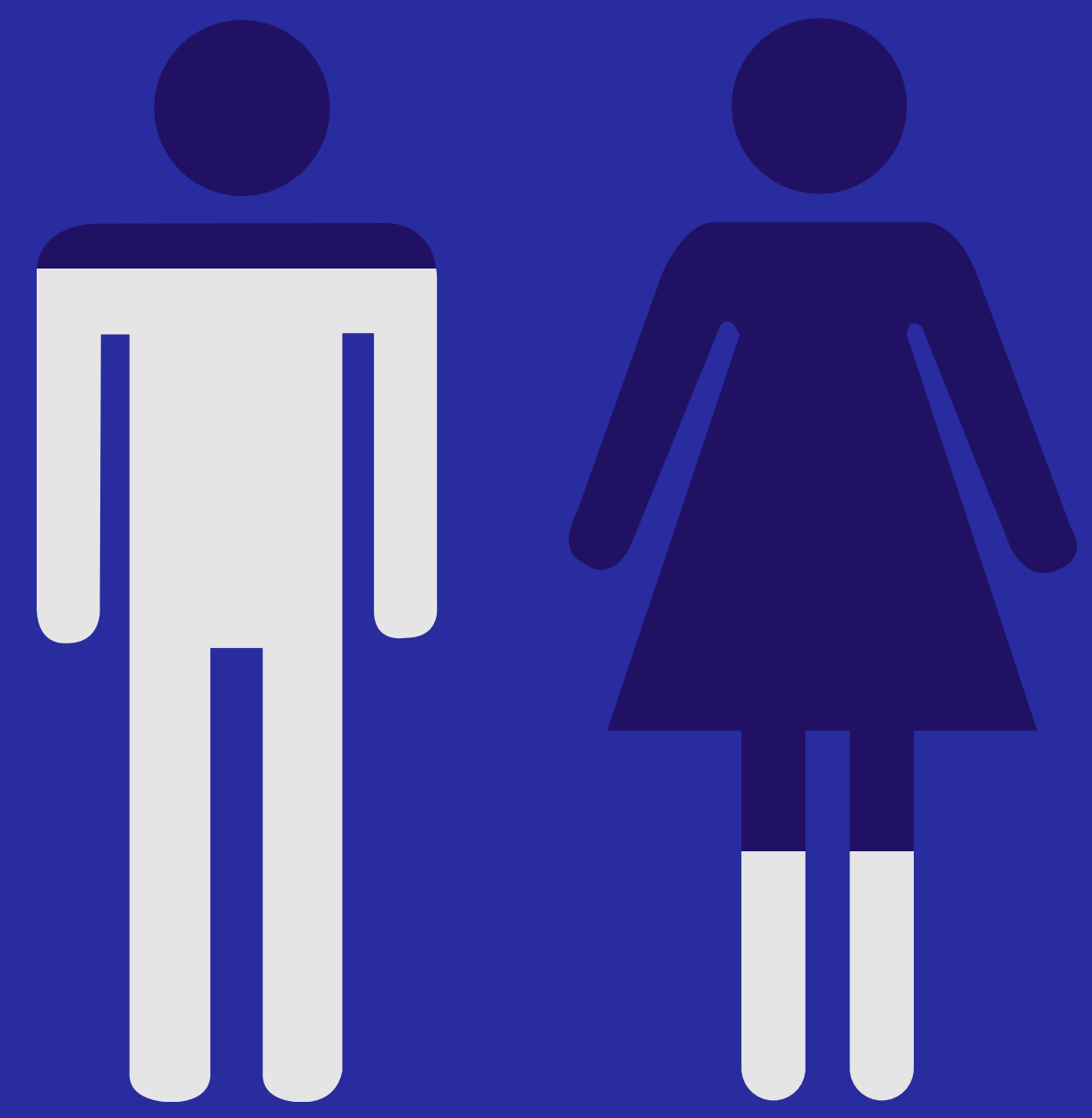
### 87%

of facility owners are planning to **invest in technology** with sensors and contactless tech leading the way.



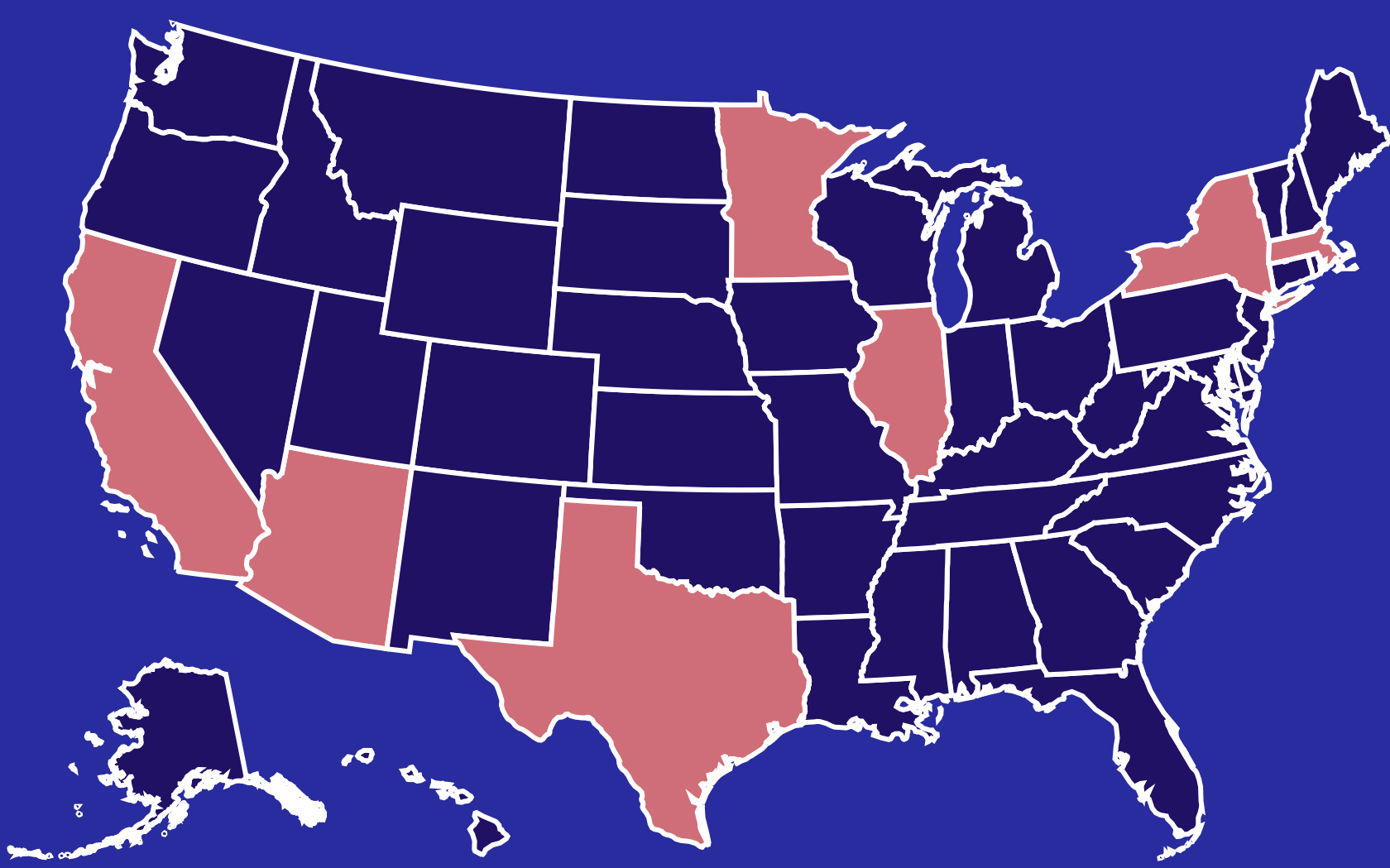
### 77%

of Facility Managers currently employed are **males** and **23% are females**.



### 83%

of Facility Managers are **40+ years old** with the average age at 50 years old.



The demand for Facility Managers tends to be higher in these metro areas:

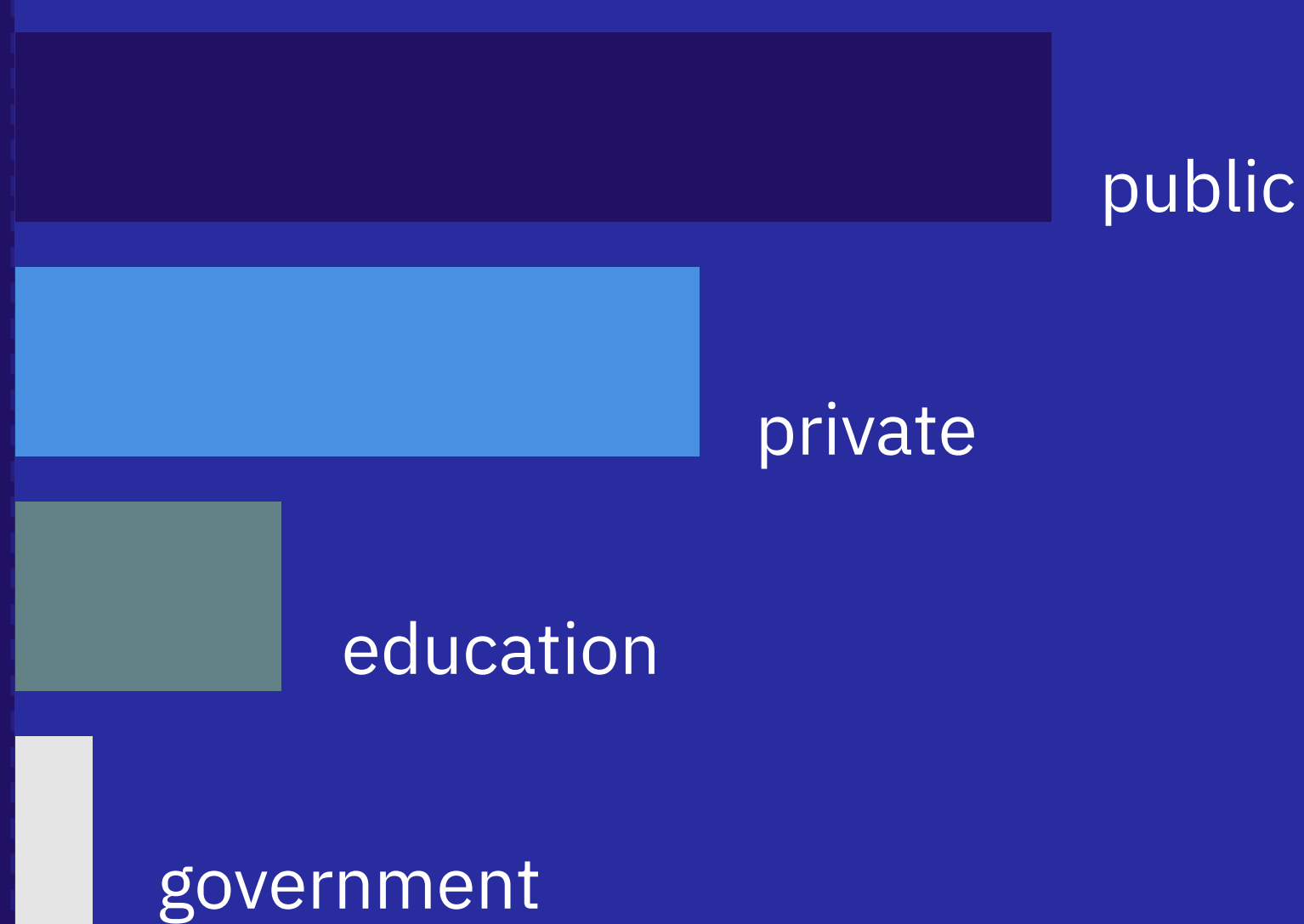
- Los Angeles/San Francisco
- Houston/Dallas
- New York City
- Minneapolis
- Chicago
- Phoenix
- Boston

The average Facility Manager **salary** is

### 92k



A look at Facilities Management employment demand by **sector**.



**bachelor's**

associate's

high school

other

### 54%

of Facility Managers hold a **bachelor's degree**.

